



**KERRAFRONT**  
CELLULAR CLADDING

**VOX**



## THE FREEDOM OF CREATION

At VOX we believe that true freedom begins at home, and how we live has a huge impact on our lives. Therefore, our goal is to continuously develop and provide comprehensive design solutions, stylistically matching each collection of wall systems, furniture, doors, floors and cladding.

The philosophy of the VOX Group is reflected in its membership in the Human Touch Group. The organisations, companies and entities affiliated with HTG share a common belief that the primary value of all business activities should be man and meeting man's actual needs. This idea assumes that each of us is, on the one hand, a company partner in its current activity, but also the main motivation for its development and possible changes.

VOX is a brand offering an extremely wide range of products for the construction and arrangement of houses, flats and public buildings. Not only do we offer good quality products, but we also offer comprehensive solutions for professionals. We have been operating on the market of building materials and interior decoration for over 25 years, serving not only the Polish market, but also overseas markets, in over forty countries.





# KERRAFRONT. CLADDING FOR LIFE

KERRAFRONT is a facade cladding, which, once installed, does not require any maintenance during use. Thanks to the innovative technology used, KERRAFRONT is extremely durable and resistant to changing weather conditions. It protects the interior of the building and prevents heat loss. It also provides good air circulation, thus preventing the formation of mould and fungus.

Thanks to flexibility and lightweight of cladding boards and their simple connecting system, its installation is easy and fast. It is 100% water resistant and the cut edges do not require any additional protection.

KERRAFRONT is divided into 5 collections, tailored to different tastes. You can choose from over 30 colours, offered on different surface structures.





# ADVANTAGES

## SAVING TIME AND MONEY DURING INSTALLATION:

- Light weight resulting in easy handling
- Wide covering width, built-in locks and factory made nail slots facilitate and speed up the installation
- Material easy to work with – not susceptible to unsightly chips and cracks during shipment and installation
- Cut ends do not absorb water and after installation do not require any additional protection eg painting

## NO MAINTENANCE REQUIRED:

- Virtually maintenance-free – no need for painting and other treatment
- Absolutely moisture resistant – does not absorb water and is not susceptible to freeze / thaw complications.
- Does not support bacterial or fungal growth

## VOX QUALITY:

- Application of KERRACORE technology in the production, which results in outstanding uniformity and density of the cellular core of the product. As a result boards feature dimensional stability and durability
- Matt surface of boards
- Connector – free joining with CONNEX system



Moisture resistant



Impact and crack resistance



Easy to keep clean



Pests resistant



Perfect cover for thermal insulation of elevation



Facade ventilation



Environment friendly. 100% recyclable



10 years guarantee





# KERRAFRONT MODERN WOOD

NEW



INSPIRED  
BY NATURE



1



## MODERN WOOD

### — NEW SHAPE

MODERN WOOD is a new collection of KERRAFRONT cladding. What distinguishes MODERN WOOD is the shape, which is the modern version of a double board which is well known and often chosen by our customers.

### — ADAPTED TO YOUR NEEDS

The new shape refers to wooden claddings but at the same time, retains the advantages of cellular cladding – resistance to water, impact and requires no maintenance. It allows for the creation of a facade with a flat surface and can be installed vertically or horizontally.

### — MODERN PRODUCT RANGE

MODERN WOOD boards have matt finish and realistic wood embossing. Collection is offered in seven colours – from natural, warm tones, to different shades of grey. MODERN WOOD collection available for double boards (FS-302).





# COLOURS



White



Ivory



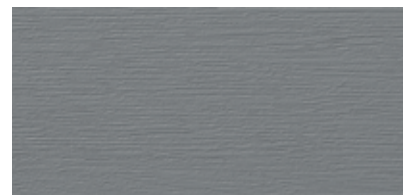
Claystone



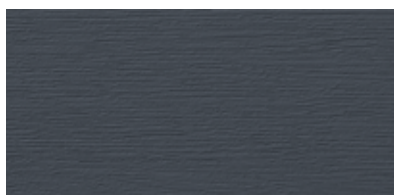
Beige



Pearl Grey



Quartz Grey



Anthracite



# KERRAFRONT TREND



# BEAUTIFUL SIMPLICITY



# 2





# TREND

## — MOTIVES OF NATURE

KERRAFRONT TREND is a collection inspired by nature – stone and minerals. The collection is offered in four colours, which are available in two design versions: STONE – with a natural stone image and SOFT – with a subtle, monochromatic shade.

## — SIMPLICITY OF FORM

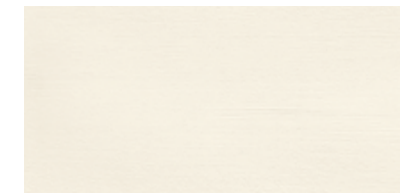
The new line follows the current trends in architecture, which are moving towards simple, large forms. Creating a modern elevation with a flat surface is now possible, thanks to the new shape. It definitely stands out among other KERRAFRONT collections.

## — FREEDOM OF ACTION

The ability to install the new boards vertically or horizontally gives a freedom of design and possibilities which allow it to be joined with other kinds of materials. TREND collection is available as single boards (FS-301).



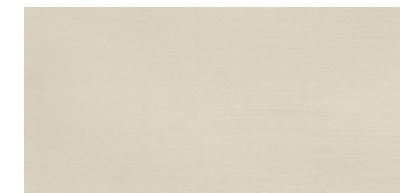
# COLOURS



Ivory Soft



Ivory Stone



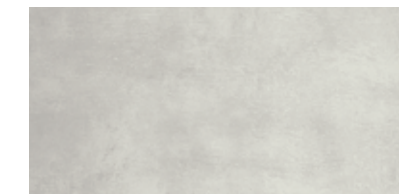
Mastic Soft



Mastic Stone



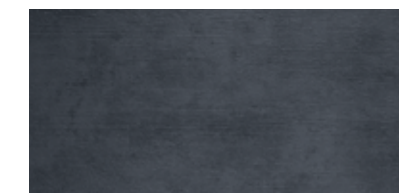
Pearl Grey Soft



Pearl Grey Stone



Anthracite Soft



Anthracite Stone





# KERRAFRONT WOOD DESIGN



# 3

## WOOD DESIGN

### — BEAUTIFUL WOODEN STRUCTURE

The WOOD DESIGN is a unique collection of facade cladding, all in natural wood colours to give a warm natural finish. It can soften the minimalist style of the house, integrate it with the environment, and give it a cosy character.

### — DURABILITY AND FUNCTIONALITY

The combination of several colours on the surface reflects warmth and depth. It perfectly combines durability and the timeless beauty and the character of natural solutions. Colour available to be applied with FS-201 (single board).

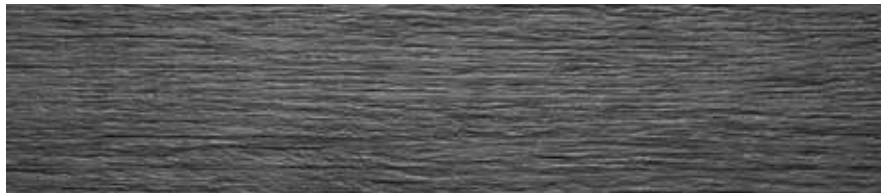


## ELEGANT BY NATURE





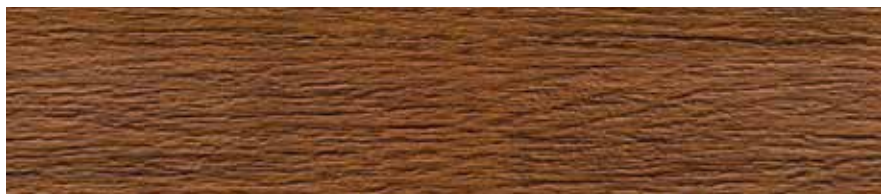
# COLOURS



Graphite



Silver Grey



Golden Oak



# KERRAFRONT CLASSIC



ALWAYS  
IN STYLE



4





# CLASSIC

## — CLASSIC STRUCTURE

The CLASSIC collection is basic line a nine colour range, both light and dark. It goes well with both traditional and modern buildings.

## — BEAUTY AND TIMELESSNESS

An attractive looking wood texture and a matt surface allow for the creation of incredibly aesthetic and long-lasting facade.

The collection is available as single boards (FS-201) and double boards (FS-202).



# COLOURS



White



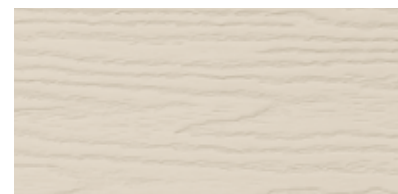
Creme



Beige



Light Grey



Claystone



Olive



Grey



Quartz Grey



Anthracite





# KERRAFRONT T-REX



# 5

## T-REX

### — RUSTIC EFFECT

T-REX is a collection of facade cladding with the elegant and deep texture of real wood with visible vertical traces of a saw created natural rustic effect.

### — DURABILITY AND ORIGINALITY

It's perfect for creating the individual character of any house, for those who value beauty and purity and who look for a durable and maintenance free solution. The collection is available as double boards (FS-202).



NATURALLY  
REFINED



# COLOURS



Creme



Beige



Blue



Sand



# KERRAFRONT



# KERRACORE TECHNOLOGY



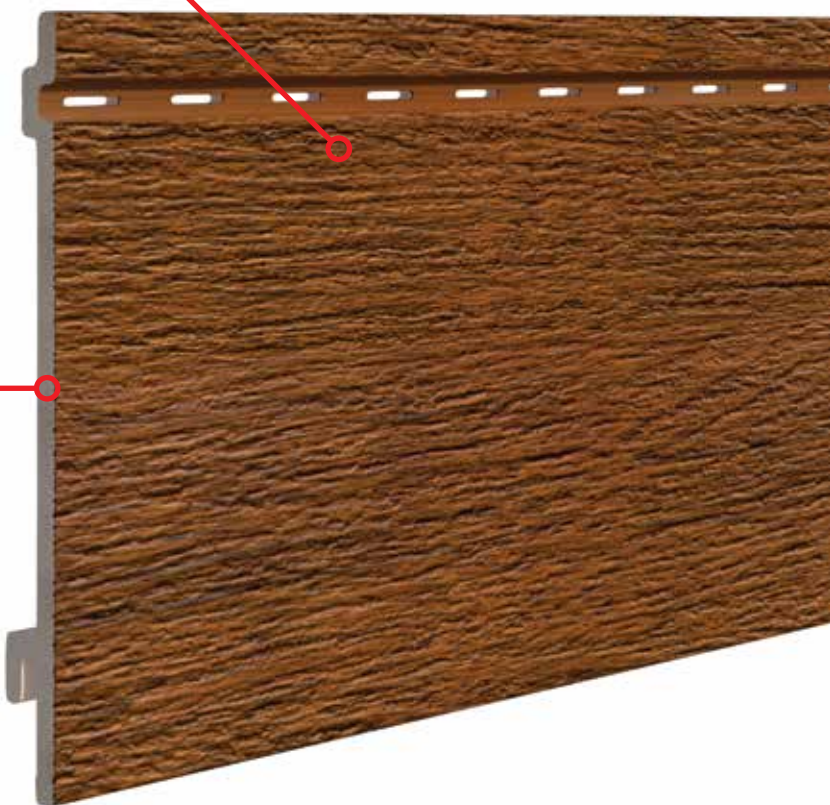
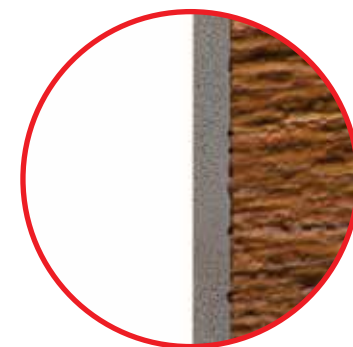
# 6

1

**TOP LAYER (SOLID PVC):**  
Resistant to impacts and scratches, holds colour and unique wood structure.

2

**CORE (FOAMED PVC):**  
Characterized by high density and homogeneity, as a result the product has mechanical strength.





# SYSTEM CONNEX



## CONNEX SYSTEM – FAST AND BEAUTIFUL INSTALLATION, WITHOUT ANY CONNECTORS!

CONNEX system – is an innovative, connector-free method of butt-joining of single boards (FS-201 and FS-301) and double boards FS-302. Cladding boards come in 2,95 m lengths. Boards have special built-in locks at each end, facilitating much quicker and easier installation, for which no additional connector elements are necessary. Consequently, the butt-joints made with the CONNEX system are almost invisible on the wall surface.

CONNEX system is available for single boards FS-201, FS-301 and double boards FS-302.

Boards connection



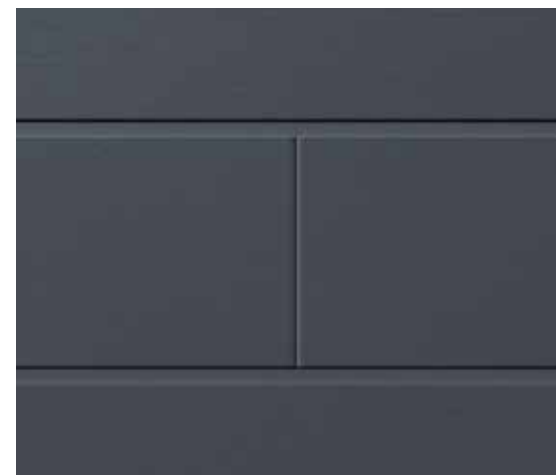
Connection with CONNEX system FS-201, 2,95 m



Connection with junction J-201



Connection with CONNEX system FS-301, 2,95 m



# BOARDS

## FS-201

Single board: 6 m, 2,95 m CONNEX  
Installation: horizontal



## FS-301

Single board: 6 m, 2,95 m CONNEX  
Installation: horizontal, vertical



## FS-202

Double board: 6 m  
Installation: horizontal/vertical



## FS-302

Double board: 6 m, 2,95 m CONNEX  
Installation: horizontal/vertical



	Single board FS-201	Single board FS-301	Double board FS-202	Double board FS-302

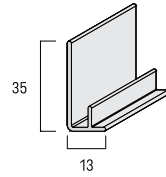
MODERN WOOD 2,95 m CONNEX				✓
MODERN WOOD 6 m				✓
TREND 2,95 m CONNEX		✓		
TREND 6 m		✓		
WOOD DESIGN 2,95 m CONNEX	✓			
WOOD DESIGN 6 m	✓			
CLASSIC 2,95 m CONNEX	✓			
CLASSIC 6 m	✓		✓	
T-REX 6 m			✓	



# PROFILES AND ACCESSORIES

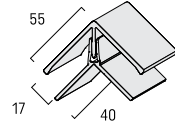
## FS-211

Starter trim  
Length 3 m



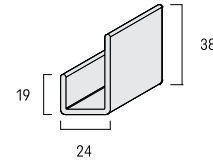
## FS-222

Universal corner (two-part)  
Length 3 m



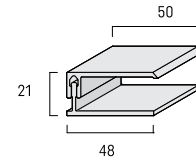
## FS-251

Universal trim U  
Length 3 m



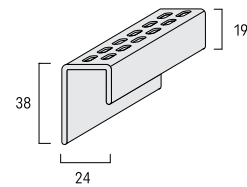
## FS-252

Top edge trim (two-part)  
Length 3 m



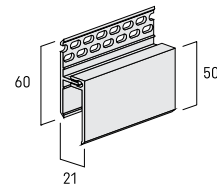
## FS-261

Perforated trim  
Length 3 m



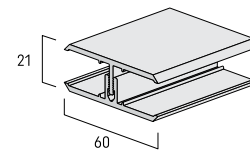
## FS-262

Ventilation trim (two-part)  
Length 3 m



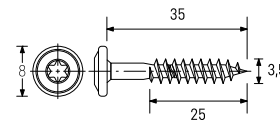
## FS-282

Center joint trim (two-part)  
Length 3 m



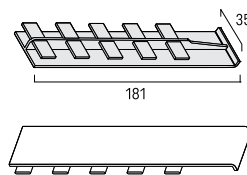
## INOX-UP3.5X35-TX15-A2

Fitting screw



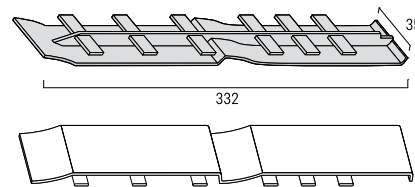
## J-201

Joint cover for FS-201



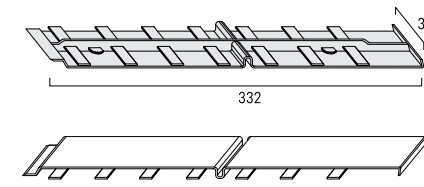
## J-202

Joint cover for FS-202



## J-302

Joint cover for FS-302







vox.pl  
profile.vox.pl

